



技术参数/TECHNICAL DATA:

应用材料/MATERIAL EMPLOYED

阀体/BODY: 钢/Steel

阀芯/VALVES: 强化硬质钢/Hardened Steel

密封/SEALS: 丁腈胶/NBR

适用工作环境/OPERATIONAL RANGE

安装/MOUNTING

按需/as preferred

温度/TEMPERATURES

理想工作温度: +40°C~+70°C/Ideal operating range between +40°C and +70°C

最高工作温度: +90°C/Max operating temperature +90°C

最低/最高环境温度: -20°C~+60°C/ Min/Max environment temps -20°C and +60°C

型号说明/MODEL CODE:



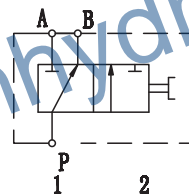
① 材料/Material: A: 铝/aluminium 空白: 碳钢/Carbon steel

② 转阀系列代号/diverter valves series code: DF3VIE型/DF3VIE type

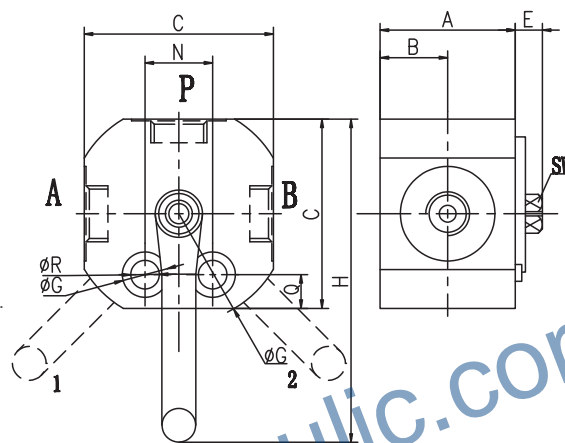
③ 连接螺纹尺寸/connection thread dimension: BBSP

④ 流量代号/flow code: 20、35、60、10、180

图形符号/SYMBOL:



外形尺寸/OVER DIMENSION:



型号 /TYPE	最大 流量 (L/min)	最大 压力 (bar)	B/A/P	A	B	C	E	F	ΦG	H	L	LW	N	Q	ΦR	ΦS	SW
DF3VIE-G1/4	20	500	G1/4	33	15	55	16	49	62	110	15.5	6	26	10	8.5	13.5	9
DF3VIE-G3/8	35	500	G3/8	38	17.5	55	16	54	62	110	15.5	8	26	10	8.5	13.5	9
DF3VIE-G1/2	60	500	G1/2	43	20	60	16	59	67	110	17	11	32	11	10.5	13.5	9
DF3VIE-G3/4	100	500	G3/4	48	22.5	75	20.5	68.5	82	180	21	12	32	14	10.5	16.5	14
DF3VIE-G1	180	500	G1	53	25	85	20.5	73.5	97	180	21	16	32	14	10.5	16.5	14

应用/APPLICATIONS:

连接P到压力流量A和P的液压回路, 当手柄杆在位置1中的时候, P和A端口相连; 当手柄的杆位于中心位置时候, P, A和B都连接 (开放中心) /Connect P to the pressure flow, A and P to the ports of the hydraulic circuit where flow has to be diverted. With lever in position 1 the flow is connected towards port A; With lever in central position ports P, A and B are all connected (open center)