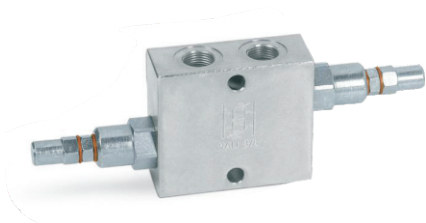
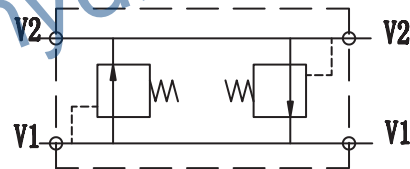


VAU 双向溢流阀 DUAL CROSS RELIEF VALVE

SHANYAN



图形符号/SYMBOL:



技术参数/TECHNICAL DATA:

应用材料/MATERIAL EMPLOYED

阀体/BODY: 钢/Steel

阀芯/VALVES: 强化硬质钢/Hardened Steel

密封/SEALS: 丁腈胶/NBR

适用工作环境/OPERATIONAL RANGE

安装/MOUNTING

按需/as preferred

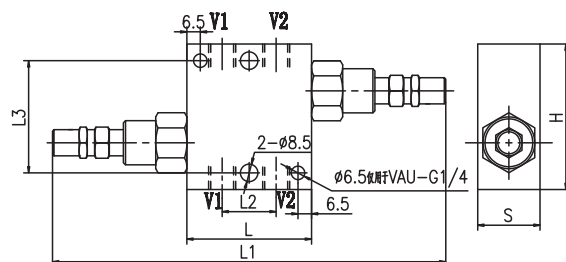
温度/TEMPERATURES

理想工作温度: +40°C~+70°C/Ideal operating range between +40°C and +70°C

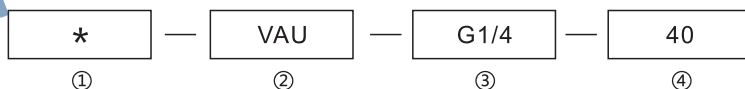
最高工作温度: +90°C/Max operating temperature +90°C

最低/最高环境温度: -20°C~+60°C/ Min/Max environment temps -20°C and +60°C

外形尺寸/OVER DIMENSION:



型号说明/MODEL CODE:



①材料/Material: A: 铝/aluminium 空白: 碳钢/Carbon steel

②溢流阀系列代号/relief valves series code: VAU型/VAU type

③连接螺纹尺寸/connection thread dimension: BBSP

④流量代号/flow code: 40、70、110

型号 /TYPE	最大流量 (L/min)	V1-V2	L	L1	L2	L3	H	S
VAU-G1/4	40	G1/4	60	158	26	54	70	30
VAU-G3/8	40	G3/8	80	178	33	54	70	30
VAU-G1/2	70	G1/2	80	204	38	54	70	30
VAU-G3/4	110	G3/4	95	219	44	54	70	35

注: 连接螺纹可以根据客户的要求来进行设计

NOTE: Thread can be designed according to customer requirements.

型号 /TYPE	弹簧规格 /SPRINGS		
	调压范围 / Press range (bar)	每转压力增量 / Press increase(bar/turn)	标准设定压力 /Standard setting(bar)
VAU-G1/4 VAU-G3/8	3-41	20	207
	10-80	40	207
	17-161	80	207
	20-210	120	207
VAU-G1/2	29-128	29	120
	97-210	50	200
VAU-G3/4	47-107	47	79
	94-158	58	125

应用/APPLICATIONS:

将V1和V2同压力流量或者驱动马达相连接, 反之其端口也为V1和V2。安装时建议根据执行元件进行选择, 避免压力下降的发生/Connect V1 and V2 to the pressure flow or to the actuator/hydraulic motor. Vice versa for the remaining ports V1 and V2. Mounting by the actuator is highly recommended in order to avoid pressure drops.

流量曲线图/FLOW DIAGRAM

