

STU 单向节流阀 STU FLOW RESTRICTOR WITH CHECK VALVE

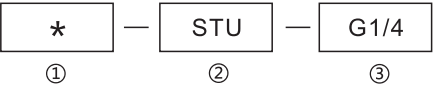
SHANYAN



技术参数/TECHNICAL DATA:

应用材料/MATERIAL EMPLOYED
阀体/BODY: 钢/Steel
阀芯/VALVES: 强化硬质钢/Hardened Steel
密封/SEALS: 丁腈胶/NBR
适用工作环境/OPERATIONAL RANGE
安装/MOUNTING
按需/as preferred
温度/TEMPERATURES
理想工作温度: +40°C~+70°C/Ideal operating range between +40°C and +70°C
最高工作温度: +90°C/Max operating temperature +90°C
最低/最高环境温度: -20°C~+60°C/ Min/Max environment temps -20°C and +60°C

型号说明/MODEL CODE:



①材料/Material: SS: 不锈钢/Stainless steel 空白: 碳钢/Carbon steel
②节流阀系列代号/Bidirectional flow control valves series code: STU型/STU type
③连接螺纹尺寸/connection thread dimension: BBSP

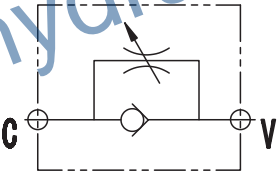
型号 /TYPE	C	最大流量 (L/min)	最大压力 (bar)	A	B	D	E	F	G	H
STU-G1/4	G1/4	12	400	73	72	32	20	M20x1	5	7
STU-G3/8	G3/8	30	400	82	80	32	25	M25x1.5	9	7
STU-G1/2	G1/2	50	400	98	92	45	30	M30x1.5	9	9
STU-G3/4	G3/4	85	400	112	100	45	40	M35x1.5	10	11
STU-G1	G1	150	320	142	122	45	45	M40x1.5	12	15

注: 1) F处压紧螺母需另行订购。2) C处连接螺纹可以根据客户的要求来进行设计
Note: 1) The impacted nut at F should be purchased by another way.
2) C can be designed according to customer requirements

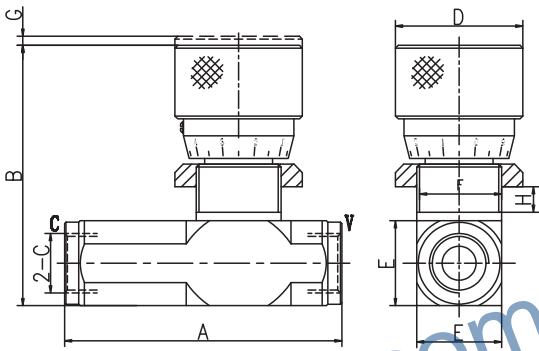
应用/APPLICATIONS:

节流阀在进口和出口之间可产生压降。该阀没有压力补偿, 因而调节流量可以改变压力和液压油粘度的关系。/The flow restrictor valves are able to produce a pressure drop between inlet and outlet. They are not pressure compensated so the regulated flow can change in function of the pressure and of the viscosity.

图形符号/SYMBOL:



外形尺寸/OVER DIMENSION:



流量曲线图/FLOW DIAGRAM

