

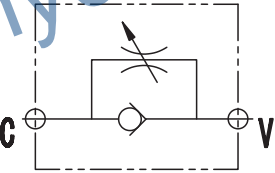
# VURF 单向节流阀

VURF FLOW RESTRICTOR WITH CHECK VALVE

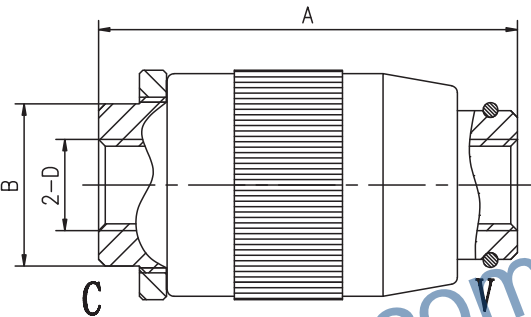
SHANYAN



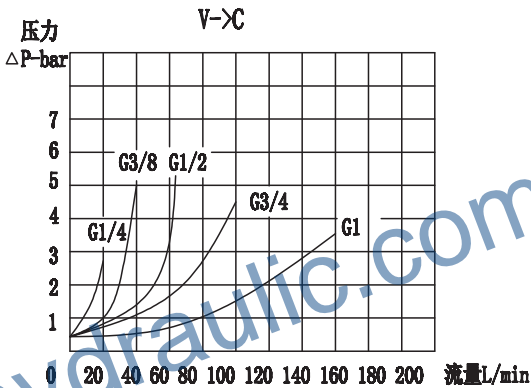
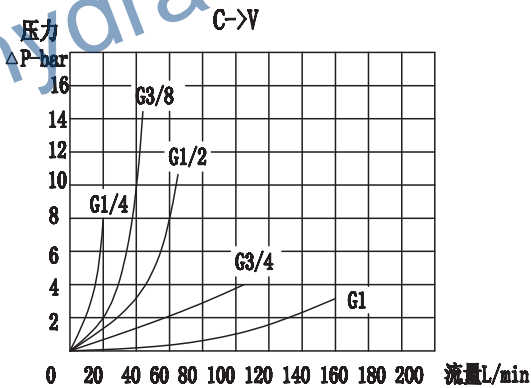
图形符号/SYMBOL:



外形尺寸/OVER DIMENSION:



流量曲线图/FLOW DIAGRAM



## 技术参数/TECHNICAL DATA:

应用材料/MATERIAL EMPLOYED

阀体/BODY: 钢/Steel

阀芯/VALVES: 强化硬质钢/Hardened Steel

密封/SEALS: 丁腈胶/NBR

适用工作环境/OPERATIONAL RANGE

安装/MOUNTING

按需/as preferred

温度/TEMPERATURES

理想工作温度: +40°C~+70°C/Ideal operating range between +40°C and +70°C

最高工作温度: +90°C/Max operating temperature +90°C

最低/最高环境温度: -20°C~+60°C/Min/Max environment temps -20°C and +60°C

## 型号说明/MODEL CODE:

*	—	VURF	—	G1/4
①		②		③

①材料/Material: SS: 不锈钢/Stainless steel 空白: 碳钢/Carbon steel

②节流阀系列代号/Bidirectional flow control valves series code: VURF型/VURF type

③连接螺纹尺寸/connection thread dimension: BBSP

型号 /TYPE	D	最大流量 (L/min)	最大压力 (bar)	A	B	开启压力 (cracking pressure)(bar)
VURF-G1/4	G1/4	12	320	62	21	0.5
VURF-G3/8	G3/8	30	320	78	26	0.5
VURF-G1/2	G1/2	50	320	80	30	0.5
VURF-G3/4	G3/4	85	280	100	36	0.5
VURF-G1	G1	120	250	118	41	0.5
注:D处连接螺纹可以根据客户的要求来进行设计 NOTE:D can be designed according to customer requirements						

## 应用/APPLICATIONS:

节流阀在进油口和出油口之间可产生压降。该阀没有压力补偿,因而调节流量可以改变压力和液压油粘度的关系。/The flow restrictor valves are able to produce a pressure drop between inlet and outlet. They are not pressure compensated so the regulated flow can change in function of the pressure and of the viscosity.