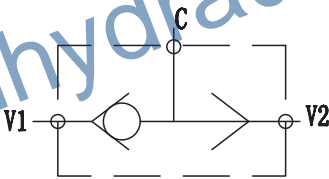




图形符号/SYMBOL:



技术参数/TECHNICAL DATA:

应用材料/MATERIAL EMPLOYED

阀体/BODY: 钢/Steel

阀芯/VALVES: 钢/Steel

适用工作环境/OPERATIONAL RANGE

安装/MOUNTING

按需/as preferred

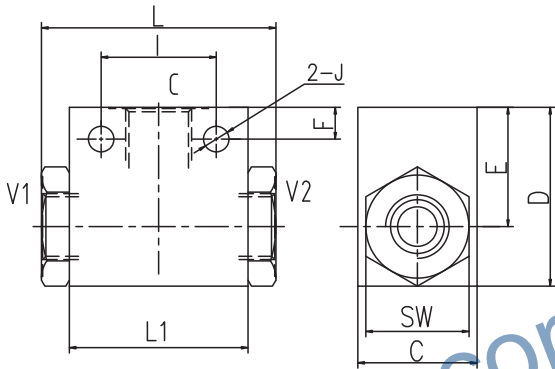
温度/TEMPERATURES

理想工作温度: +40°C~+70°C/Ideal operating range between +40°Cand+70°C

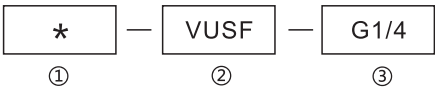
最高工作温度: +90°C/Max operating temperature +90°C

最低/最高环境温度: -20°C~+60°C/ Min/Max environment temps -20°C and +60°C

外形尺寸/OVER DIMENSION:



型号说明/MODEL CODE:



① 材料/Material: SS: 不锈钢/Stainless steel 空白: 碳钢/Carbon steel

② 梭阀系列代号/shuttle valve series code: VUSF型/VUSF type

③ 连接螺纹尺寸/connection thread dimension: BBSP

型号 /TYPE	最大压力 (bar)	最大流量 (L/min)	DN (mm)	L	L1	C	D	E	F	G	I	J	SW
VUSF-G1/4	350	20	6	48	36	25	35	22.5	7.5	G1/4	25	5.5	22
VUSF-G3/8	350	45	10	59	45	30	45	30	8	G3/8	29	6.5	27
VUSF-G1/2	350	80	13	90	57	35	50	32.5	8.5	G1/2	36	6.5	32
VUSF-G3/4	350	110	20	113	62	45	60	37	6.5	G3/4	50	8.5	41
VUSF-G1	350	150	25	120	80	50	80	54.5	11	G1	60	10.5	46

应用/APPLICATIONS:

梭阀相当于两个单向阀组合的阀,其作用相当于“或门”。这是一种三通阀,它比较来自油路V1和V2的两路输入压力信号,然后将其中的高压信号通过X口引出。

The shuttle valve is equivalent to two check valve combination valve, and its role is equivalent to "OR gate".There are 3 ways valves, which detect the higher pressure signal between 2 input signal.