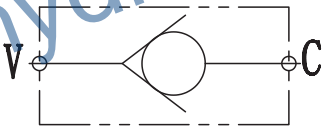


SY-RV 单向阀 SY-RV CHECK VALVE

SHANYAN



图形符号/SYMBOL:

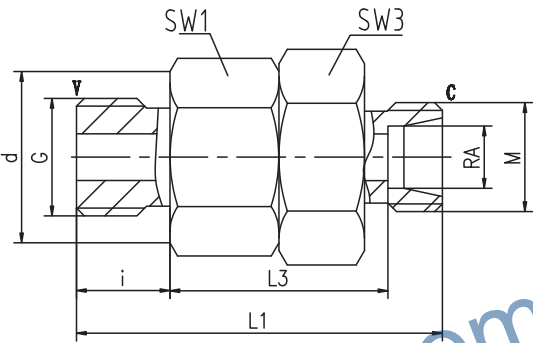


技术参数/TECHNICAL DATA:

应用材料/MATERIAL EMPLOYED
阀体/BODY: 钢体/Steel
阀芯/VALVES: 硬质钢/Hardened Steel
适用工作环境/OPERATIONAL RANGE
安装/MOUNTING
按需/as preferred

温度/TEMPERATURES
理想工作温度: +40°C~+70°C/Ideal operating range between +40°Cand +70°C
最高工作温度: +90°C/Max operating temperature +90°C
最低/最高环境温度: -20°C~+60°C/ Min/Max environment temps -20°C and +60°C

外形尺寸/OVER DIMENSION:



型号说明/MODEL CODE:



- ①材料/Material: SS: 不锈钢/Stainless steel 空白: 碳钢/Carbon steel
②单向阀系列代号/check valve series code: SY-RV型/SY-RV type
③连接螺纹尺寸/connection thread dimension: LR: SR: G螺纹, 进口为G螺纹, 出口为LR, SR螺纹/LR: SR: G thread, The oil inlet is G thread, the oil outlet is LR, SR thread.

应用/APPLICATIONS:

压力作用下使得流体从V流向C, 而液体从C向V流动时则被反向密封, 油液无法通过/Under pressure so that the fluid flow from the V to C, and the flow from C to V and blocked in the reverse direction.

连接口略图	系列	型号	压力 (bar)	管径 (RA)	G	L1	L3	d	i	SW1	SW2	SW3	M
	轻系列L	SY-RV-L06G1/8WD	315	6	G1/8	43	28	14	8	19	14	17	M12x1.5
		SY-RV-L08G1/4WD		8	G1/4	49	30	19	12	24	17	22	M14x1.5
		SY-RV-L10G1/4WD		10	G1/4	58	38.5	19	12	27	19	24	M16x1.5
		SY-RV-L12G3/8WD		12	G3/8	62	42.5	22	12	32	22	27	M18x1.5
		SY-RV-L15G1/2WD		15	G1/2	70	48.5	27	14	36	27	32	M22x1.5
		SY-RV-L18G1/2WD	250	18	G1/2	71.5	50	27	14	41	32	38	M26x1.5
		SY-RV-L22G3/4WD		22	G3/4	78.5	55	32	16	50	36	48	M30x2
		SY-RV-L28G1WD		28	G1	90.5	63	40	18	60	41	55	M36x2
		SY-RV-L35G1 1/4WD		35	G1 1/4	98.5	69	50	20	70	50	65	M45x2
		SY-RV-L42G1 1/2WD		42	G1 1/2	101.5	69	55	22	70	60	65	M52x2
	重系列S	SY-RV-S06G1/4WD	400	6	G1/4	50.5	31.5	19	12	19	17	19	M14x1.5
		SY-RV-S08G1/4WD		8	G1/4	50.5	31.5	19	12	19	19	19	M16x1.5
		SY-RV-S10G3/8WD		10	G3/8	57.5	38	22	12	24	22	22	M18x1.5
		SY-RV-S12G3/8WD		12	G3/8	60.5	41	22	12	27	24	24	M20x1.5
		SY-RV-S14G1/2WD	315	14	G1/2	66.5	44.5	27	14	32	27	27	M22x1.5
		SY-RV-S16G1/2WD		16	G1/2	70	48	27	14	36	30	30	M24x1.5
		SY-RV-S20G3/4WD	250	20	G3/4	78	52	32	16	41	36	36	M30x2
		SY-RV-S25G1WD		25	G1	84	54.5	40	18	50	46	46	M36x2
		SY-RV-S30G1 1/4WD		30	G1 1/4	95.5	64	50	20	60	50	50	M42x2
		SY-RV-S38G1 1/2WD		38	G1 1/2	103	69.5	55	22	70	60	60	M52x2
		说明：开启压力为0.3Mpa / NOTE: the pressure of opening is 0.3Mpa											