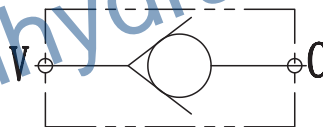




图形符号/SYMBOL:



技术参数/TECHNICAL DATA:

应用材料/MATERIAL EMPLOYED

阀体/BODY: 钢体/Steel

阀芯/VALVES: 硬质钢/Hardened Steel

适用工作环境/OPERATIONAL RANGE

安装/MOUNTING

按需/as preferred

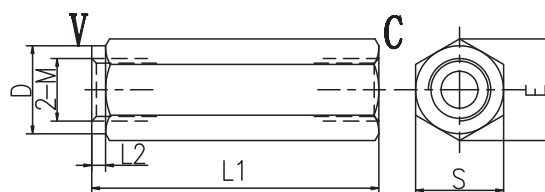
温度/TEMPERATURES

理想工作温度: +40°C~+70°C/Ideal operating range between +40°C and +70°C

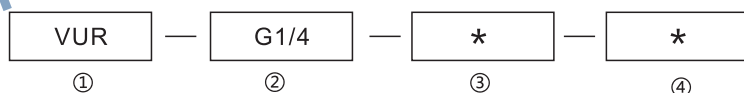
最高工作温度: +90°C/Max operating temperature +90°C

最低/最高环境温度: -20°C~+60°C/ Min/Max environment temps -20°C and +60°C

外形尺寸/OVER DIMENSION:



型号说明/MODEL CODE:



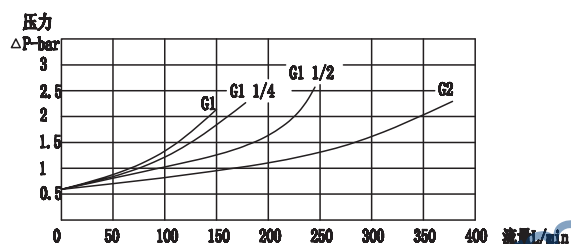
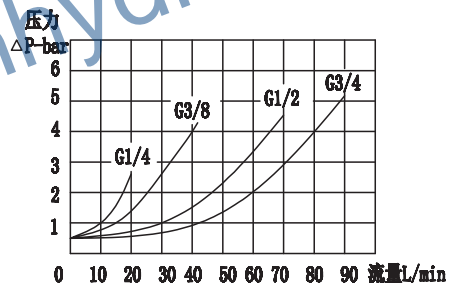
① 单向阀系列代号/check valve series code: VUR直通型/VUR through-type

② 连接螺纹尺寸/connection thread dimension: 1=BBSP、2=NPTF

③ 开启压力/opening pressure: 0=不装弹簧/Without thread 0.5=0.5bar 1.5=1.5bar 3=3bar 5=5bar

④ 表面处理/Surface treatment: 1=三价铬/Trivalent chromium

流量曲线图/FLOW DIAGRAM



型号 /TYPE	DN (mm)	最大流量 (L/min)	PN (Bar)	尺寸 /DIMENSION				
				L1	L2	E	S	D
VUR-G1/4-*	8	30	500	62	3	21.5	19	19
VUR-G3/8-*	10	45	500	68	3	27.5	24	24
VUR-G1/2-*	12	70	500	77	3	34.5	30	30
VUR-G3/4-*	16	110	400	88	3	41.5	36	36
VUR-G1-*	20	160	350	105	3	47	41	41
VUR-G1 1/4-*	25	210	350	130	3	63	55	55
VUR-G1 1/2-*	30	320	350	138	3	75	65	65
VUR-G2-*	40	460	250	160	3	92	80	80

注: M处连接螺纹可以根据客户的要求来进行设计

NOTE: M can be designe according to customer requireme-nts

应用/APPLICATIONS:

压力作用下使得流体从V流向C,而液体从C向V流动时则被反向密封,油液无法通过/Under pressure so that the fluid flow from the V to C, and the flow from C to V and blocked in the reverse direction.