

技术参数/TECHNICAL DATA:

应用材料/MATERIAL EMPLOYED

管体/BODY : 钢/Steel

阀芯/VALVES : 钢/Steel

适用工作环境/OPERATIONAL RANGE

安装/MOUNTING

按需/as preferred

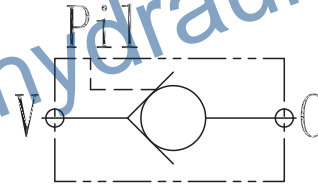
温度/TEMPERATURES

理想工作温度: +40°C~+70°C/Ideal operating range between +40°C and +70°C

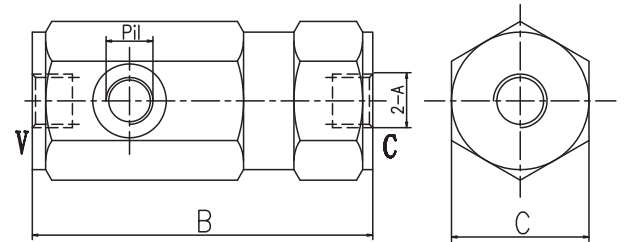
最高工作温度: +90°C/Max operating temperature +90°C

最低/最高环境温度: -20°C~+60°C/ Min/Max environment temps -20°C and +60°C

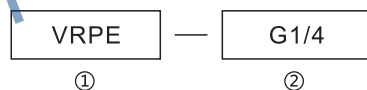
图形符号/SYMBOL:



外形尺寸/OVER DIMENSION:



型号说明/MODEL CODE:

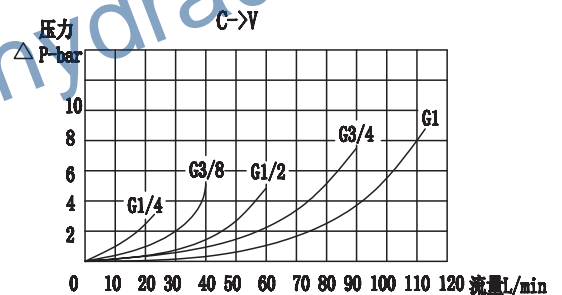


① 液控单向阀系列代号/single check series code : VRPE型/VRPE type

② 连接螺纹尺寸/connection thread dimension : BBSP

型号 /TYPE	A	最大流量 (L/min)	最大压力 (bar)	B	C	Pil	先导比 (pilot ratio)
VRPE-G1/4	G1/4	25	350	102	40	G1/4	1:3.6
VRPE-G3/8	G3/8	40	350	108	41		1:3.2
VRPE-G1/2	G1/2	60	350	120	42		1:2.8
VRPE-G3/4	G3/4	100	300	131	55		1:3.2
VRPE-G1	G1	150	300	170	60		1:6.2

流量曲线图/FLOW DIAGRAM



应用/APPLICATIONS:

液控单向阀允许一个方向的自由流动（极小的压降）；而反方向则通常是关闭的，当有来自另一个油路的先导压力方可打开该阀。/The pilot operated check valves allow free flow in a direction (with low pressure drops) and stop it in the opposite direction until they are opened by the pilot pressure (coming from the other line of the circuit).

