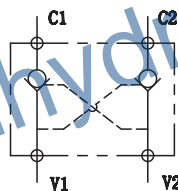
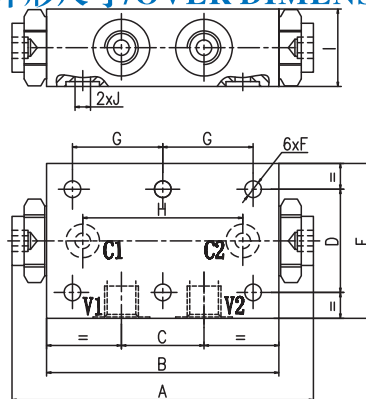




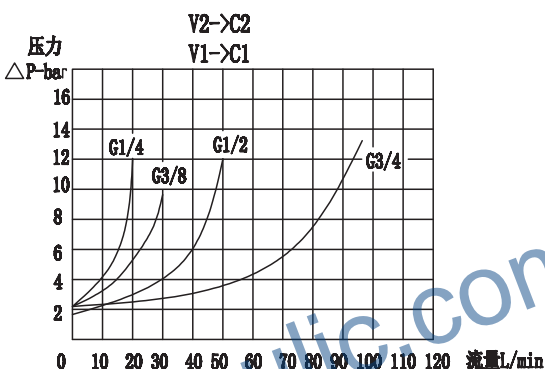
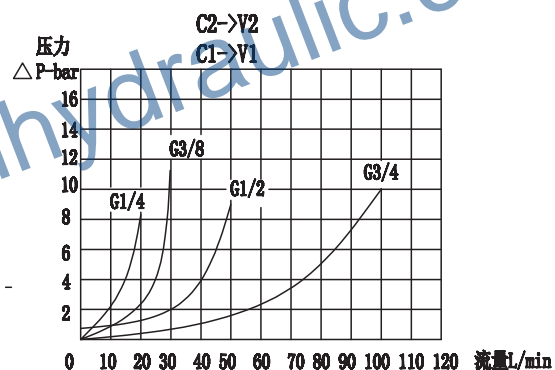
图形符号/SYMBOL:



外形尺寸/OVER DIMENSION:



流量曲线图/FLOW DIAGRAM



## 技术参数/TECHNICAL DATA:

应用材料/MATERIAL EMPLOYED

阀体/BODY: 钢/Steel

阀芯/VALVES: 强化硬质钢/Hardened Steel

密封/SEALS: 丁腈胶/NBR

适用工作环境/OPERATIONAL RANGE

安装/MOUNTING

按需/as preferred

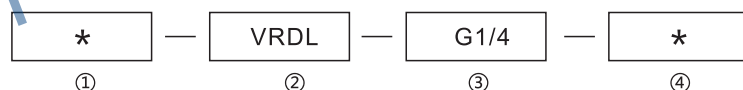
温度/TEMPERATURES

理想工作温度: +40°C~+70°C/Ideal operating range between +40°C and +70°C

最高工作温度: +90°C/Max operating temperature +90°C

最低/最高环境温度: -20°C~+60°C/ Min/Max environment temps -20°C and +60°C

## 型号说明/MODEL CODE:



①材料/Material: A: 铝/aluminum 空白: 碳钢/Carbon steel

②双液控单向阀系列代号/single check series code: VRDL-FL型/VRDL-FL type

③连接螺纹尺寸/connection thread dimension: BBSP

④法兰连接(板式连接)/Flangeable: FL

型号 /TYPE	最大流量 (L/min)	最大压力 (bar)		先导比 (pilot ratio)	开启压力 (cracking pressure) (bar)
		钢 /steel	铝 /aluminium		
VRDL-G1/4-FL	20	350	210	7.1:1	3.5
VRDL-G3/8-FL	30			7.1:1	3.5
VRDL-G1/2-FL	50			3.2:1	3.5
VRDL-G3/4-FL	100			4:1	3.5

型号 /TYPE	C1-C2 V1-V2	A	B	C	D	E	F	G	H	I	J	O-ring
VRDL-G1/4-FL	G1/4	110	90	32	40	64	Φ6.5	35	62	34	Φ6	9.19x2.62
VRDL-G3/8-FL	G3/8	110	90	32	40	64	Φ6.5	35	62	34	Φ6	9.19x2.62
VRDL-G1/2-FL	G1/2	142.5	114	34	40	70	Φ8.5	40	65	35	Φ10	15.54x2.62
VRDL-G3/4-FL	G3/4	166	140	46	51	83	Φ10.5	48	96	44	Φ14	18.72x2.62

## 应用/APPLICATIONS:

液控单向阀允许一个方向的自由流动(极小的压降);而反方向则通常是关闭的,当有来自另一个油路的先导压力方可打开该阀。/The pilot operated check valves allow free flow in a direction (with low pressure drops) and stop it in the opposite direction until they are opened by the pilot pressure (coming from the other line of the circuit).