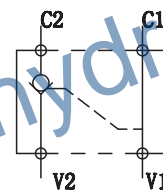
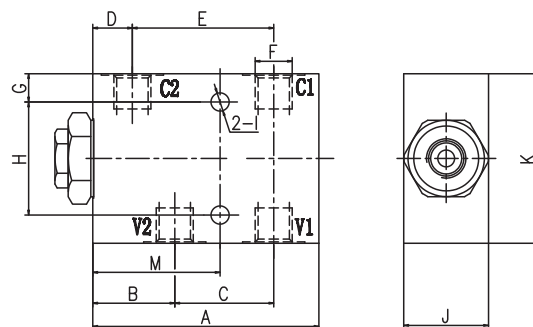




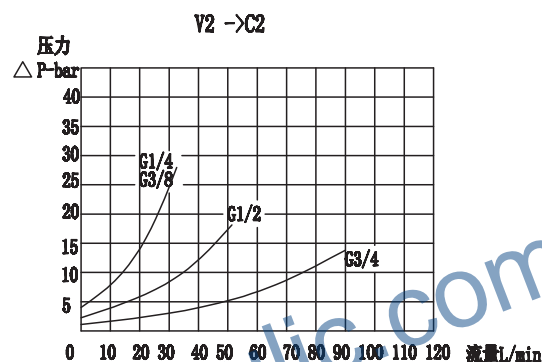
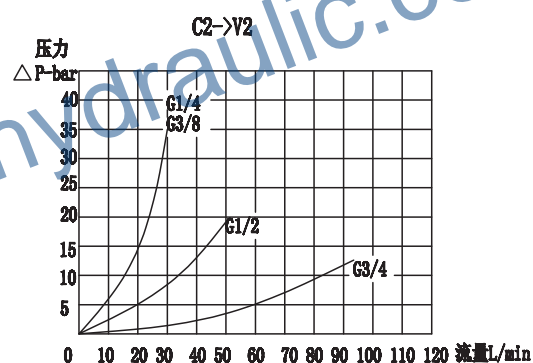
图形符号/SYMBOL:



外形尺寸/OVER DIMENSION:



流量曲线图/FLOW DIAGRAM



技术参数/TECHNICAL DATA:

应用材料/MATERIAL EMPLOYED

阀体/BODY: 钢/Steel

阀芯/VALVES: 钢/Steel

密封/SEALS: 丁腈胶/NBR

适用工作环境/OPERATIONAL RANGE

安装/MOUNTING

按需/as preferred

温度/TEMPERATURES

理想工作温度: +40°C~+70°C/Ideal operating range between +40°C and +70°C

最高工作温度: +90°C/Max operating temperature +90°C

最低/最高环境温度: -20°C~+60°C/Min/Max environment temps -20°C and +60°C

型号说明/MODEL CODE:



①材料/Material: A: 铝/aluminium 空白: 碳钢/Carbon steel

②液控单向阀系列代号/single check valve series code: VRSL型/VRSL type

③连接螺纹尺寸/connection thread dimension: BBSP

型号 /TYPE	最大流量 (L/min)	最大压力 (bar)		先导比 (pilot ratio)	开启压力 (cracking pressure) (bar)
		钢 /steel	铝 /aluminium		
VRSL-G1/4	20	350	200	7.1:1	3.5
VRSL-G3/8	30			7.1:1	3.5
VRSL-G1/2	50			3.2:1	3.5
VRSL-G3/4	100			4:1	3.5

型号 /TYPE	A	B	C	D	E	F	G	H	I	J	K	M
VRSL-G1/4	80	29	35	14	50	G1/4	10	40	Φ6.5	30	60	45
VRSL-G3/8	80	29	35	14	50	G3/8	10	40	Φ6.5	30	60	45
VRSL-G1/2	100	38	38	19	57	G1/2	15	40	Φ8.5	35	70	57
VRSL-G3/4	140	47	68	25	90	G3/4	20	50	Φ10.5	44	90	70

应用/APPLICATIONS:

液控单向阀允许一个方向的自由流动(极小的压降);而反方向则通常是关闭的,当有来自另一个油路的先导压力方可打开该阀。/The pilot operated check valves allow free flow in a direction (with low pressure drops) and stop it in the opposite direction until they are opened by the pilot pressure (coming from the other line of the circuit).