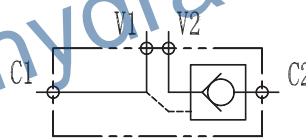




图形符号/SYMBOL:



技术参数/TECHNICAL DATA:

应用材料/MATERIAL EMPLOYED

阀体/BODY: 钢/Steel

阀芯/VALVES: 钢/Steel

密封/SEALS: 丁腈胶/NBR

适用工作环境/OPERATIONAL RANGE

安装/MOUNTING

按需/as preferred

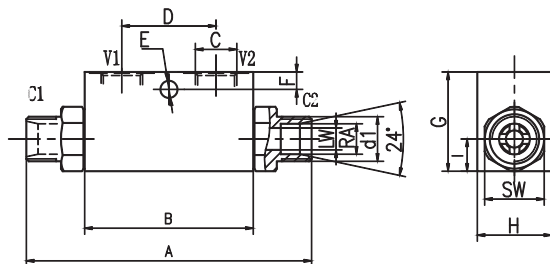
温度/TEMPERATURES

理想工作温度: +40°C ~ +70°C/Ideal operating range between +40°C and +70°C

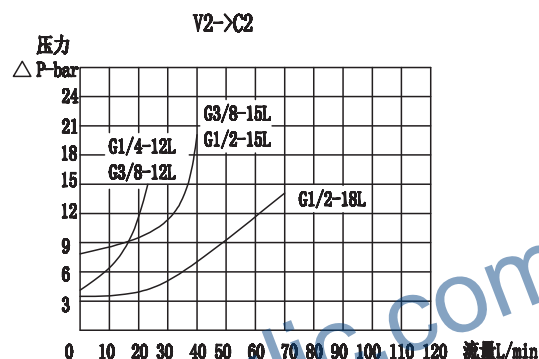
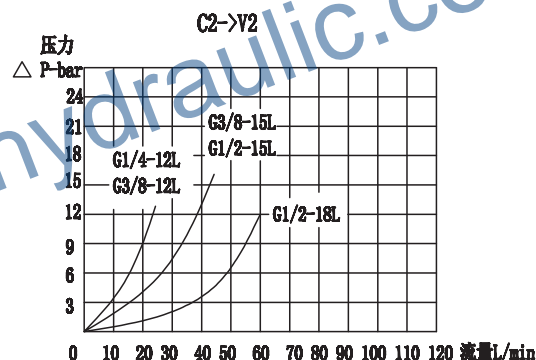
最高工作温度: +90°C/Max operating temperature +90°C

最低/最高环境温度: -20°C ~ +60°C/ Min/Max environment temps -20°C and +60°C

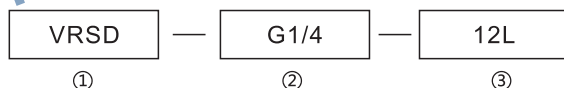
外形尺寸/OVER DIMENSION:



流量曲线图/FLOW DIAGRAM



型号说明/MODEL CODE:



① 单向液压锁系列代号/single pilot check valve series code: VRSD型/VRSD type

② 阀体连接螺纹形式/connection thread dimension: BBSP

③ 接头连接螺纹形式/ Threaded connection type: 12L、15L、18L(DIN2353)

型号 /TYPE	最大压力 (bar)	最大流量 (L/min)	先导比 (pilot ratio)	开启压力 (cracking pressure)(bar)
VRSD-G1/4-12L	350	20	1:4.5	3.5
VRSD-G3/8-12L		20	1:4.5	3.5
VRSD-G3/8-15L		50	1:4	3.5
VRSD-G1/2-15L		50	1:4	3.5
VRSD-G1/2-18L	300	80	1:4	3.5

型号 /TYPE	A	B	C	D	E	F	G	H	I	RA	LW	d1	SW
VRSD-G1/4-12L	115	68	G1/4	38	7	7	40	30	13	12.3	12	M18x1.5	24
VRSD-G3/8-12L	115	68	G3/8	38	7	7	40	30	13	12.3	15	M18x1.5	24
VRSD-G3/8-15L	139	80	G3/8	40	8.5	15	50	40	16	15.3	15	M22x1.5	27
VRSD-G1/2-15L	139	80	G1/2	40	8.5	15	50	40	16	15.3	18	M22x1.5	27
VRSD-G1/2-18L	163	90	G1/2	40	8.5	15	60	40	20	18.3	18	M26x1.5	30

以上型号产品均不带卡套接头, 如需带卡套型号后面加 "-KT"
带卡套订货示例: VRSD-G1/4-12L-KT
All types of products are not with the compression fitting sets of joints,
if you need it add "-KT" after the type
With compression fitting sets Ordering example: VRSD-G1/4-12L-KT

应用/APPLICATIONS:

液控单向阀允许一个方向的自由流动(极小的压降); 而反方向则通常是关闭的, 当有来自另一个油路先导压力方可打开该阀。/The pilot operated check valves allow free flow in a direction (with low pressure drops) and stop it in the opposite direction until they are opened by the pilot pressure (coming from the other line of the circuit).